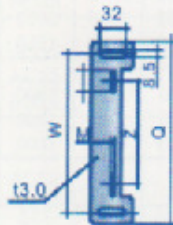
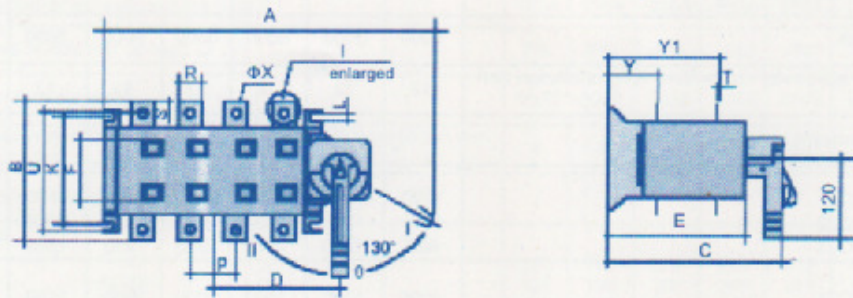
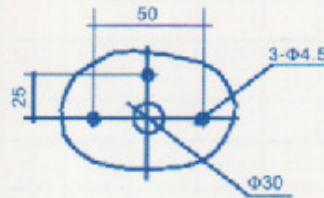


**Load Break Disconnecter Switch  
GGLZ1-125A-4000A CHANGEOVER LOAD BREAK SWITCH**

External Dimension and installation Dimension of GGLZ1-125A-630A  
Changeover Load isolation switch :



Installation bottom plate for



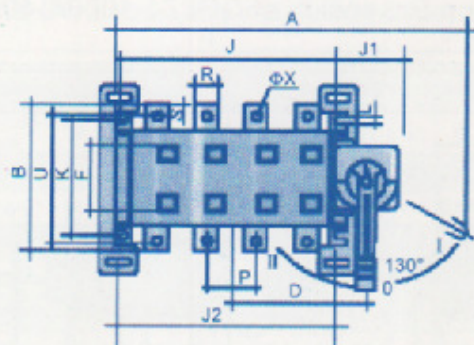
Installation size of handle

Specification	Dimension of Bottom Board				
	I	M	Z	W	Q
GGLZ1-125A-1600A					
125A	55	8.5	95	216	244
160A	55	8.5	95	216	244
200A	55	8.5	116	216	244
250A	55	8.5	116	216	244
315A - 400A	60	8.5	180	280	311
500A - 630A	60	8.5	180	280	311
1000A - 1600A	60	8.5	180	280	311

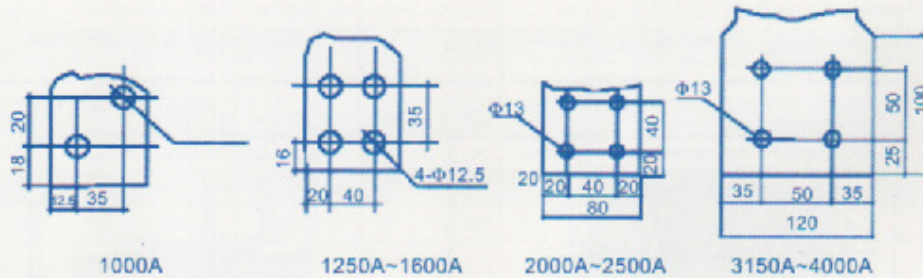
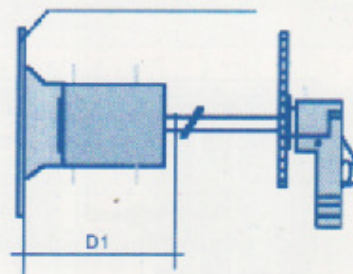
# Load Break Disconnect Switch

## GGLZ1-125A-4000A CHANGEOVER LOAD BREAK SWITCH

**GECO®**



Installation bottom plate for operation outside the board



### External Dimension and Installation Dimension (Table):

Specification	External Dimension and Installation Dimension																			
	A	B	C	D	D1	E	J	J1	J2	K	L	P	R	S	T	U	ØX	Y	Y1	F
GGLZ1-125A-1600A																				
125A-163A/3	270	135	212	89	195	150	120	65	120	95	7	36	20	25	3.5	115	9	55	121	59
125A-163A/4	300	135	212	104	195	150	150	65	150	95	7	36	20	25	3.5	115	9	55	121	59
200-250A/3	307	170	260	110	215	172	160	65	160	115	11	50	25	30	3.5	140	11	70	140	76
200-250A/4	357	170	260	135	215	172	210	65	210	115	11	50	25	30	3.5	140	11	70	140	76
315-400A/3	372	240	297	150	275	238	210	77	210	180	13	65	32	40	5	206	11	83	192	94
315-400A/4	432	240	297	180	275	236	275	77	275	180	13	65	32	40	5	206	11	83	192	94
500-630A/3	372	240	297	150	275	236	210	77	210	180	13	65	32	40	6	206	11	83	192	94
500-630A/4	432	240	297	180	275	236	275	77	275	180	13	65	32	40	6	206	11	83	192	94